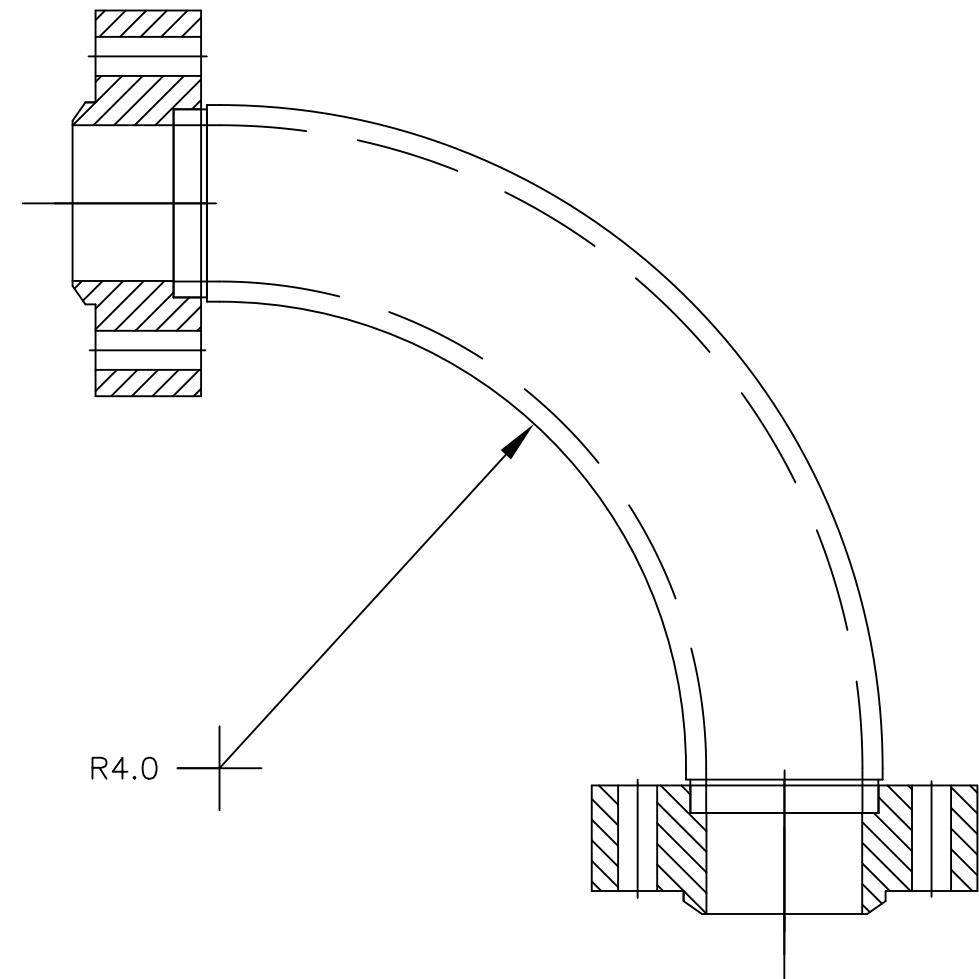
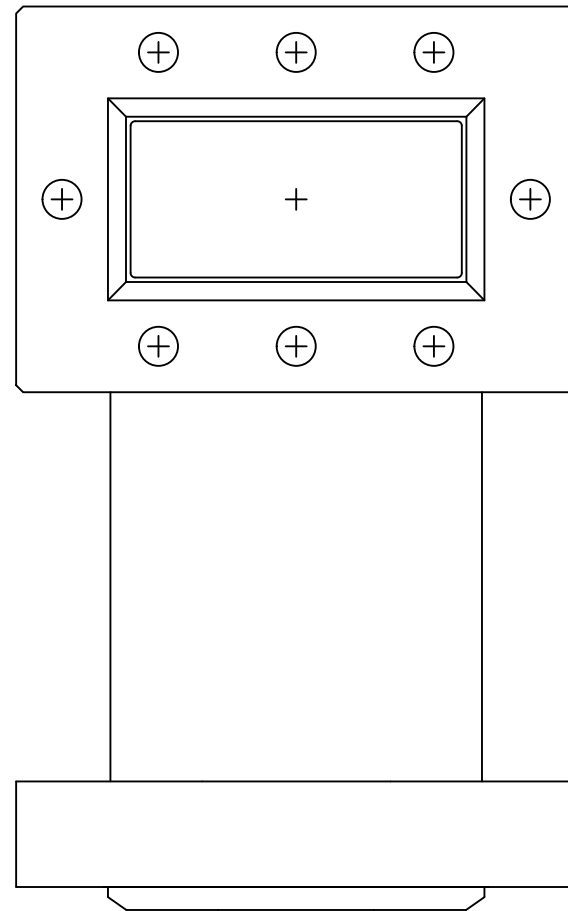


| REVISIONS | | | | |
|-----------|-----|-------------------------|-----------|-------------|
| ZONE | REV | DESCRIPTION | DATE | APPROVED |
| | 0 | RELEASED FOR PRODUCTION | 4/14/2015 | Lou Nielsen |



2. PACKAGE TO PREVENT DAMAGE DURING SHIPPING AND HANDLING.

1. UNLESS OTHERWISE SPECIFIED FABRICATION TOLERANCES ARE \square , //, \perp , $-$, \oplus WITHIN .005 T.I.R.

NOTES:

| | | | | | |
|---|--|--|--------------------------------|-------------------------|----------|
| MATERIAL | | WR284 OFHC COPPER W/G, ALLOY 10100, 0.173" WALL | | | |
| TOLERANCES (UNLESS OTHERWISE SPECIFIED) | | CML Engineering, Inc. 2020 Ridgecrest Place, Escondido, CA 92029 TEL: 760-432-8490 FAX: 760-432-8350 | | | |
| DECIMALS: 1 PLACE +/- .050 2 PLACE +/- .020 3 PLACE +/- .005 FRACTIONS: +/- 1/16 ANGLES: +/- 1/2 DEGREE | | | | | |
| FINISH: 63 U INCH OR BETTER EDGES: BREAK EDGES 1/32 R MAX. | | SIZE B | CAGE CODE 1ZLK8 | DWG NO. 1220-05-0000 | REV 0 |
| MATERIAL: SEE L/M | | SCALE NONE | Drawn By: L/JN Date: 4/14/2015 | SHEET 1 of 1 | |